



Preservation of Software Based Art at the San Francisco Museum of Modern Art

Martina Haidvogel, Mark Hellar, Jill Sterrett

[MEMBERSHIP](#) | [OUR COLLECTION](#) | [FOR EDUCATORS](#) | [PRESS ROOM](#) | [CALENDAR](#)



[VISIT](#) | [EXHIBITIONS + EVENTS](#) | [EXPLORE MODERN ART](#) | [ABOUT US](#) | [GET INVOLVED](#) | [OUR EXPANSION](#) | [SHOP](#)

[SEARCH](#)

[Currently at SFMOMA](#) | [Upcoming Exhibitions](#) | [Upcoming Talks + Events + Film](#) | [Art Auction 2013](#) | [Countdown Celebration](#) | [Calendar](#) | [Archive](#)

[Share](#) | [Printable](#)

E.SPACE



Erik Adigard / m.a.d. (with Dave Thau), *Timelocator* (detail), 2001

January 01, 2001 - January 01, 2002

e.space was created to explore new art forms that exist only on the web. These commissioned online projects explore new forms of storytelling — taking a fresh look at what constitutes an exhibition — within the unique space of the personal computer screen.

Related Links

[Erik Adigard](#)
[Lynn Hershman](#)
[Yael Kanarek](#)
[Mark Napier](#)
[Thompson & Craighead](#)
[Matthew Ritchie](#)
[Julia Scher](#)



Major support for e.space has been generously provided by the James Family Foundation.

Video vs. Software Based Art



Agent Ruby, 1999-2002, web project, <http://agentruby.sfmoma.org/>



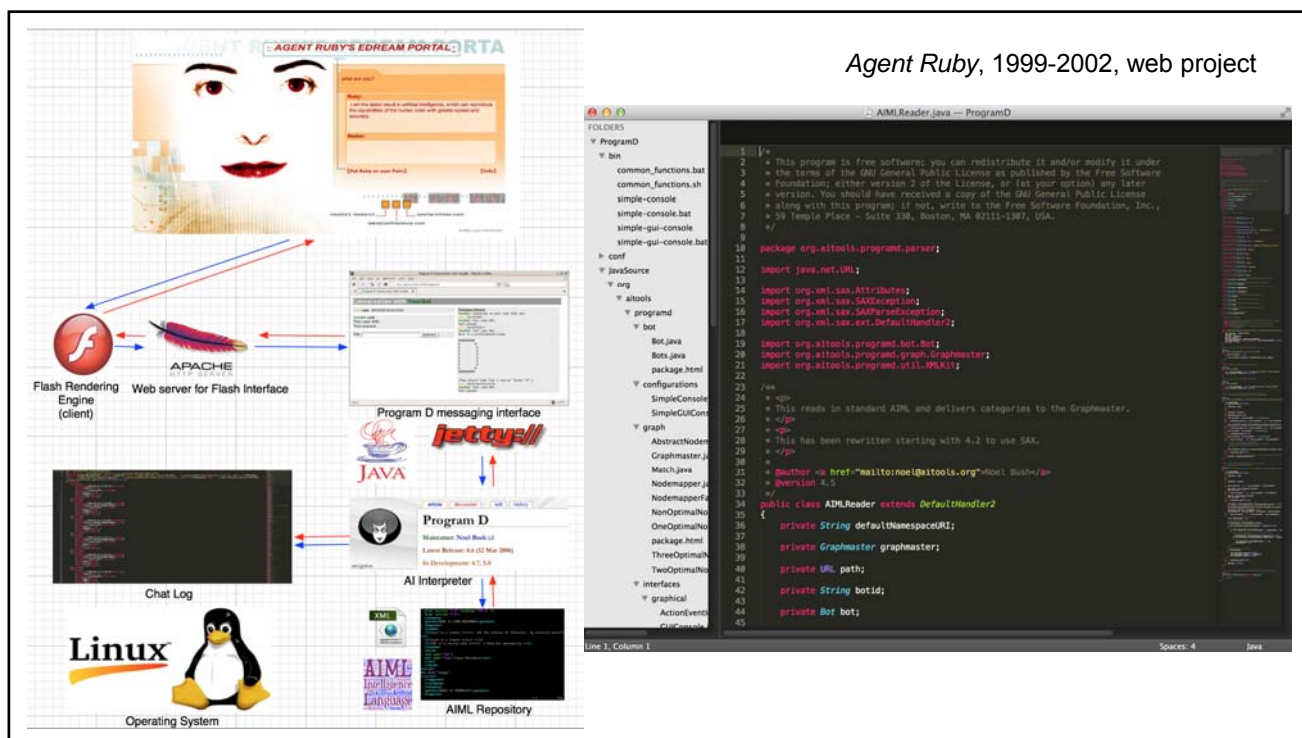
Agent Ruby, 1999-2002, web project



"I was making a film called *Teknolust*. And I wanted to have a kind of expanded cinema experience, a portal for the character in the film to talk to people when she's lonely...a physical virtual reality."

Lynn Hershman Leeson, 2009

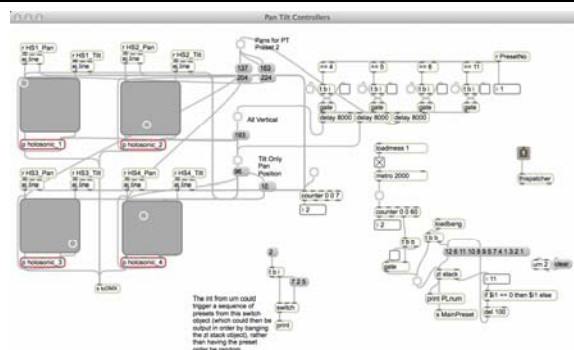
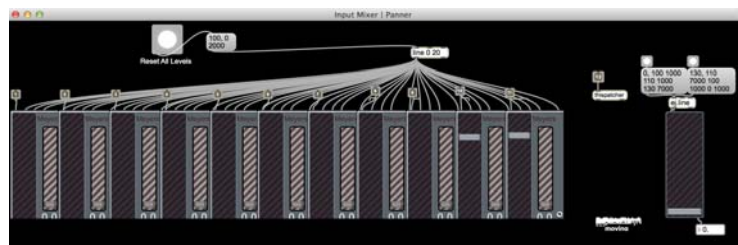
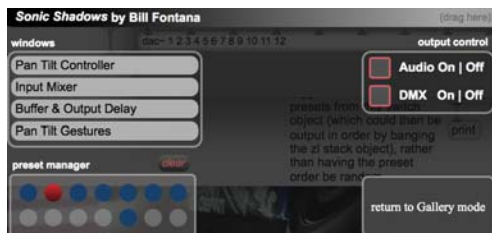
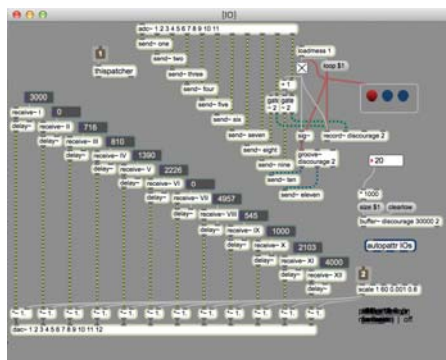
Agent Ruby, 1999-2002, web project



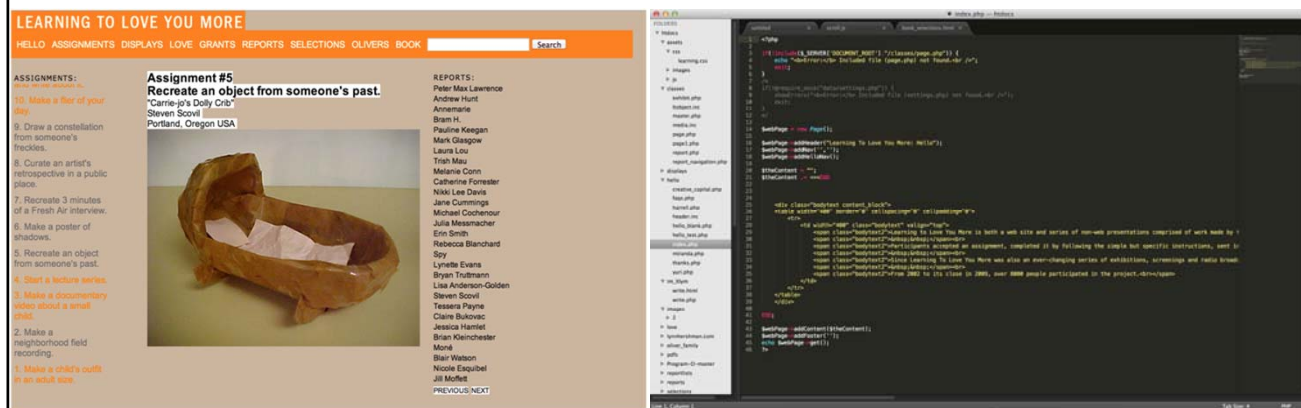
Sonic Shadows, 2010, sound sculpture



Sonic Shadows, 2010, sound sculpture



Learning To Love You More, 2002-2009, web project and archive
<http://www.learningtoloveyoumore.com/>



The Records Cluster

- Curatorial Description
- Technical Narrative
- Installation Documents
- Preservation Requirements
- Artist Interview
- Correspondence
- Exhibition / Loans
- Contracts